



# HATCHING EGG GRADING AND SELECTION GUIDE



## IDEAL EGG

Clean, free of cracks, correct shape, within acceptable weight range



CALCIUM DEPOSIT



BLOOD STAINED



CRACKED



DIRTY



STAINED



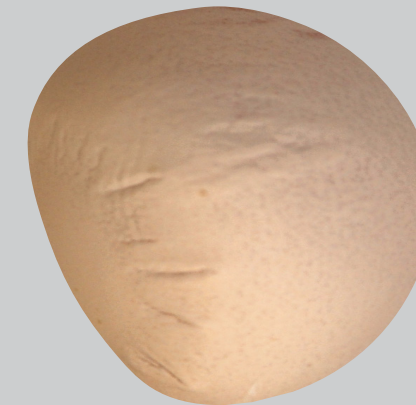
TOE PUNCHED



MEMBRANE



ROUND



SLAB SIDED



SMALL



THIN SHELL



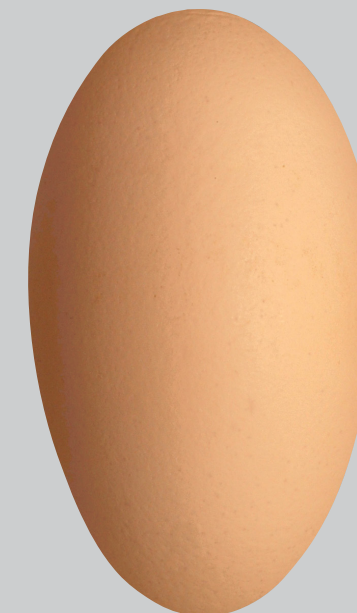
YOLK STAINED



WRINKLED



HAIRLINE CRACK



ELONGATED



DOUBLE YOLK

Eggs with defects (described with red text) should be discarded and never incubated