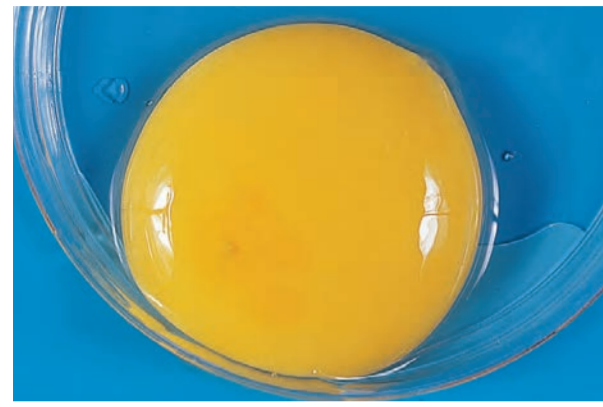
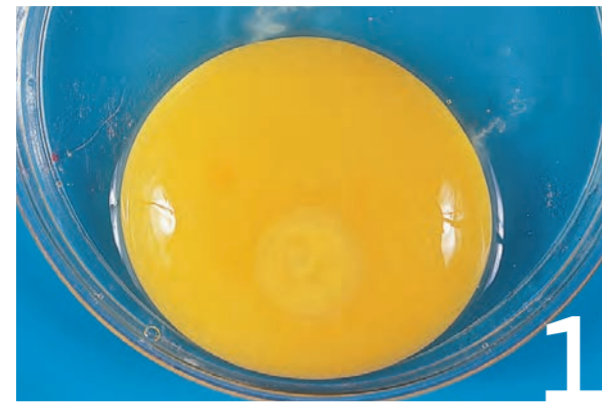


Chick Embryo Development



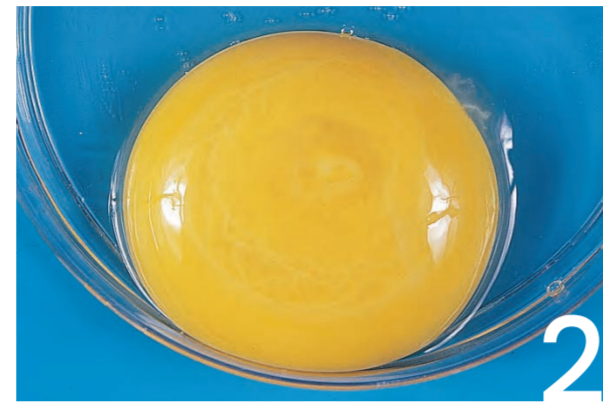
INFERTILE

- No development.



DAY 1

- Appearance of tissue development.



DAY 2

- Tissue development very visible.
- Appearance of blood vessels.



DAY 3

- Heart beats.
- Blood vessels very visible.



DAY 4

- Eye pigmented.



DAY 5

- Appearance of elbows and knees.



DAY 6

- Appearance of beak.
- Voluntary movements begin.



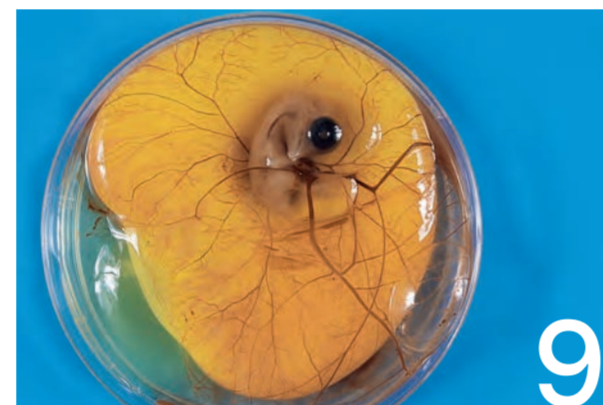
DAY 7

- Comb growth begins.
- Egg tooth begins to appear.



DAY 8

- Feather tracts seen.
- Upper and lower beak equal in length.



DAY 9

- Embryo starts to look bird-like.
- Mouth opening appears.



DAY 10

- Egg tooth prominent.
- Toe nails.



DAY 11

- Comb serrated.
- Tail feathers apparent.



DAY 12

- Toes fully formed.
- First few visible feathers.



DAY 13

- Appearance of scales.
- Body covered lightly with feathers.



DAY 14

- Embryo turns head towards large end of egg.



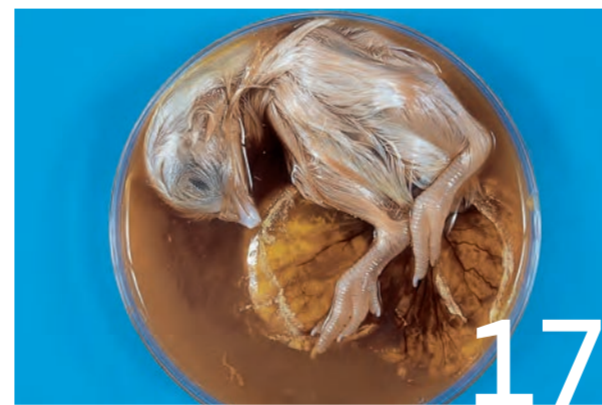
DAY 15

- Gut is drawn into abdominal cavity.



DAY 16

- Feathers cover complete body.
- Albumen nearly gone.



DAY 17

- Amniotic fluid decreases.
- Head is between legs.



DAY 18

- Growth of embryo nearly complete.
- Yolk sac is still on outside of embryo.
- Head is under the right wing



DAY 19

- Yolk sac draws into body cavity.
- Amniotic fluid gone.
- Embryo occupies most of space within egg (not in the air cell).



DAY 20

- Yolk sac drawn completely into body.
- Embryo becomes a chick (breathing in air cell).
- Internal and external pip.

