

# BROILER CHICK GRADING GUIDE



## HOCKS



Perfect Hocks



Slight blushing but no abrasion



Open cut or abrasion on hocks



Severe abrasion



Damaged hocks

## COLORING



Perfect Chick



Light grey feathers and legs



Small grey spot



Majority dark grey or black



Dark grey or black hocks

## DEFECTS



Cross beak or anatomical defects



Bloodied beak



Poor feathering



Mechanical injury

## NAVELS



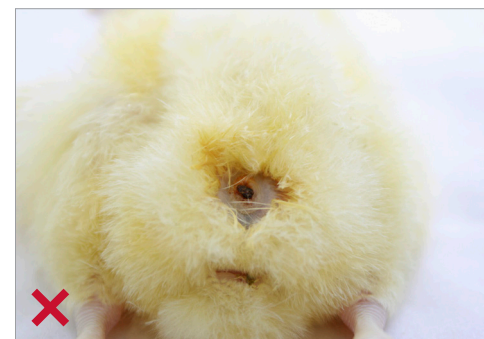
Well healed navel



Healed navel with small string (string does not protrude above chick down)



Large button on navel



Open navel



Large or long string on navel